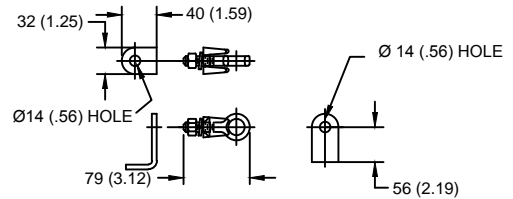
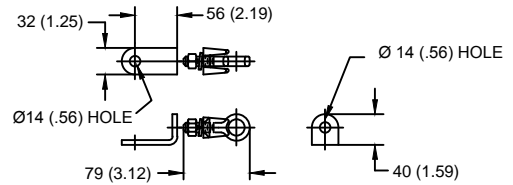


LINE TERMINAL DETAIL



HDG TERMINAL BRACKET, PART No. 89606-4001
 ONE HDG TERMINAL, PART No. 271414-3001
 SUITABLE FOR COPPER OR ALUMINUM CONDUCTOR SIZE
 Ø 7 (.25) - Ø 21 (.81)
 25 - 240 sq mm
 AWG#4 - 500 MCM

GROUND TERMINAL DETAIL



HDG TERMINAL BRACKET, PART No. 89606-4001
 ONE HDG TERMINAL, PART No. 271414-3001
 SUITABLE FOR COPPER OR ALUMINUM CONDUCTOR SIZE
 Ø 7 (.25) - Ø 21 (.81)
 25 - 240 sq mm
 AWG#4 - 500 MCM

Ø = DIAMETER
 HDG = HOT DIP GALVANIZED

CHARACTERISTICS	
RATED VOLTAGE (Ur)	60 kVrms
MCOV (Uc)	48 kVrms
MASS	16.3 kg (35.9 lb)
COG ABOVE BASE	358 (14.1)
CREEPAGE DISTANCE	1827 (71.9)
STRIKE DISTANCE	640 (25.2)
LIGHTNING IMP W/S	367 kVpk
SWITCHING IMP WET W/S	308 kVpk
POWER FREQ WET W/S	172 kVrms
TOV 1s NO PRIOR DUTY	69 kVrms
TOV 10s NO PRIOR DUTY	66 kVrms
TOV 1s W/PRIOR DUTY	65.8 kVrms
TOV 10s W/PRIOR DUTY	62.1 kVrms

CANTILEVER FORCE	
MAXIMUM CONTINUOUS	1414 N (318 lbf)
ULTIMATE (max pk)	2829 N (636 lbf)

RECOMMENDED CLEARANCE (METAL - METAL)	
PHASE TO GROUND	259.5 (10.2)
PHASE TO PHASE	307 (12.1)

- NOTES:
 1. DIMENSIONS IN millimeters(inches) SUBJECT TO ±3% TOLERANCE
 2. CLEARANCE AND INSULATION W/S VOLTAGE APPLY AT SEA LEVEL
 3. ARRESTER SUITABLE FOR OPERATION AT ALTITUDES UP TO 4380 m (14370 ft)
 4. PACKAGED IN A CORRUGATED BOX.

.5µSEC 10kA IR kV	SWITCHING SURGE IR kV		MAXIMUM 8/20 DISCHARGE VOLTAGE - kV AT					
	500 A	1 KA	1.5 kA	3.0 kA	5 kA	10 kA	20 kA	40 kA
160	115	120	123	129	135	145	157	179

IEEE C62.11
 STATION-CLASS
 SURGE ARRESTER
 Program Revision
 2015.07.30.08.09.10

CONFIDENTIAL: THIS DRAWING AND ITS CONTENTS ARE CONFIDENTIAL AND THE EXCLUSIVE PROPERTY OF HUBBELL POWER SYSTEMS. NO PUBLICATION, DISTRIBUTION OR COPIES MAY BE MADE WITHOUT THE WRITTEN CONSENT OF HUBBELL POWER SYSTEMS. HUBBELL POWER SYSTEMS UNPUBLISHED ALL RIGHTS RESERVED UNDER THE COPYRIGHT LAWS.

TITLE EVP ARRESTER 48 KV MCOV			
SIZE S	DWG NO. 191064614	CAT / PART / ASSY NO. EVP0048003002	REV 1
DO NOT SCALE THIS DRAWING	DRN BY NON	DATE 05/03/11	SHEET 1 OF 1

REV DATE
 05/03/11

